

HOT AND TECHY

**BREZZA**

THE CITY-BRED SUV



## TECHNOLOGY

Prepare for city adventures with advanced and exciting technology of the Hot and Techy Brezza.

The City-Bred SUV comes with an Electric Sunroof along with techy features like Head Up Display with Turn-By-Turn Navigation, 360 View Camera, SmartPlay Pro+ Infotainment system with Wireless Android Auto/Apple CarPlay and Next Generation Suzuki Connect to make your city drive exciting.



Electric Sunroof



Head Up Display



360 View Camera



SmartPlay Pro+  
with Surround Sense  
powered by ARKAMYS



Next Gen Suzuki Connect



## EXTERIOR

The Hot and Techy Brezza introduces a youthful and energetic design, ensuring you are ready for an adventurous drive in the city every day. Its commanding stance, impressive looks and precision detailing ensure that it never goes unnoticed. The City-Bred SUV comes with a clean Beltline with Bold Geometric Alloy Wheels, Dual Tone exteriors with a Shark Fin Antenna that enhances its design.



**Bold Geometric Alloy Wheels**



**Dual LED Projector Headlamps with LED DRLs**



**LED Tail Lamps**



The new Brezza is engineered with a **1.5L Advanced K-Series Dual Jet, Dual VVT Petrol Engine with Progressive Smart Hybrid Technology\***.

LXi & VXi MT	ZXi & ZXi+ MT	VXi, ZXi & ZXi+ AT
<b>17.38***</b> km/l	<b>17.38***</b> km/l	<b>19.80***</b> km/l



It is also available with a **1.5L Advanced K-Series Engine with S-CNG technology**, which comes with Dual Inter-dependent Electronic Control Units (ECU) and an Intelligent Injection system to provide an air-fuel ratio that ensures superior performance and great fuel efficiency.

LXi, VXi, & ZXi CNG MT
<b>25.51***</b> km/kg

\*Only available in VXi, ZXi & ZXi+ AT



## DUAL TONE INTERIORS WITH INTERIOR AMBIENT LIGHTING

## INTERIOR

The Hot and Techy Brezza carries a youthful and exciting appeal on the inside with your convenience at its core. It gets a unique design, modern and sleek look and black and brown interiors with silver accents for a sporty and urban feel. The City-Bred SUV also has Rear AC Vents, a Fast Charging USB Port (Type A and C) and a flat bottom Steering Wheel for your enhanced comfort and convenience. The 6-Speed Automatic Transmission with Paddle Shifters and Telescopic Steering ensure you go on city adventures comfortably.



Wireless Charging Dock



6-Speed AT with Paddle Shifters



Rear AC Vents with Fast Charging USB Ports



## SAFETY

The Hot and Techy Brezza comes with a bundle of safety features that help keep the fun in your urban adventures intact. It is equipped with 20+ safety features including 6 airbags and ESP with Hill Hold Assist, ensuring that your safety is our priority.

**6 AIRBAGS**

Hill Hold Assist



Electronic Stability Program



FEATURES LIST				
VARIANTS	LXi MT/AT LXi CNG MT	VXi MT/AT VXi CNG MT	ZXi MT/AT ZXi CNG MT	ZXi+ MT/AT
<b>SAFETY</b>				
Head Up Display	-	-	-	✓
360 View Camera	-	-	-	✓
Side and Curtain Airbags <sup>AA</sup>	-	-	-	✓
Shoulder Height Adjustable Front Seat Belts	-	-	-	✓
Electronic Stability Program (ESP)	✓(Petrol)	✓(Petrol)	✓(Petrol)	✓
Hill Hold Assist	✓(Petrol)	✓(Petrol)	✓(Petrol)	✓
Driver & Co-Driver Airbags <sup>AA</sup>	✓	✓	✓	✓
Rear View Camera	-	-	✓	✓
Front Seat Belt Pre-tensioners & Force Limiter	✓	✓	✓	✓
Reverse Parking Sensor with Infographic Display	✓	✓	✓	✓
High Speed Warning Alert <sup>#</sup>	✓	✓	✓	✓
Seat Belt Reminder Lamp & Buzzer (All Occupants) <sup>AAA</sup>	✓	✓	✓	✓
Rear Wiper & Washer	-	-	✓	✓
Rear Defogger (Electric)	-	✓	✓	✓
Anti-theft Security System	✓	✓	✓	✓
Suzuki TECT Body	✓	✓	✓	✓
Dual Horn	✓	✓	✓	✓
Engine Immobilizer	✓	✓	✓	✓
ISOFIX Child Seat Restraint System	✓	✓	✓	✓
Impact Sensing Door Unlock	✓	✓	✓	✓
Day/Night Rear View Mirror	✓(Manual)	✓(Manual)	✓(Manual)	✓(Auto)
Door Ajar Warning Lamp	✓	✓	✓	✓
Central Locking	✓(5 Door)	✓(5 Door)	✓(5 Door)	✓(5 Door)
<b>INFOTAINMENT</b>				
Touch Screen Audio	-	17.78cm (SmartPlay Studio)	17.78cm (SmartPlay Pro)	22.86cm (SmartPlay Pro+)
Premium Sound System	-	-	ARKAMYS	ARKAMYS (Surround Sense)
Android Auto and Apple CarPlay <sup>###</sup>	-	✓	Wireless	Wireless
Remote Control App for Infotainment	-	✓	✓	✓
Steering Mounted Controls: Audio and Bluetooth	-	✓	✓	✓
Over the Air Update (OTA)	-	-	✓	✓
Onboard Voice Assistant (Wake up through Hi Suzuki with Barge in Feature)	-	-	✓	✓
USB & Bluetooth Connectivity	-	✓	✓	✓
Speakers (4)	-	✓	✓	✓
Tweeters (2)	-	-	✓	✓
MID with TFT Color Display	-	-	✓	✓
MID with Segment Display	✓	✓	-	-
Speedometer with Tachometer	✓	✓	✓	✓
Audible Headlight On Reminder	✓	✓	✓	✓
Low Fuel Warning Light	✓	✓	✓	✓
Gear Shift Indicator (MT Only)	✓	✓	✓	✓
<b>COMFORT AND CONVENIENCE</b>				
Electric Sunroof	-	-	✓	✓
Wireless Charging Dock	-	-	-	✓
Rear Fast Charging USB (Type A and C)	-	-	-	✓
Cruise Control	-	-	✓	✓
Height Adjustable Driver Seat	-	✓	✓	✓
Rear Center Armrest (Sliding Type With Storage)	-	-	-	✓
Cooled Glove Box	-	-	-	✓
60:40 Split Seat (Rear)	-	-	✓	✓
Overhead Console with Sunglass Holder & Map Lamp	-	-	✓	✓
Engine Push Start/Stop With Smart Key	-	-	✓	✓
Rear Center Armrest With Cup Holder	-	-	✓	✓
Adjustable Rear Seat Headrest	-	✓	✓	✓
Electrically Adjustable ORVM	✓	✓	✓	✓
Electrically Foldable ORVM	-	✓	✓	✓(Auto Fold)
Driver Side Front Window (Auto Up/Down)	✓	✓	✓	✓
Rear AC Vents	✓	✓	✓	✓
Auto Climate control	-	✓	✓	✓
Keyless Entry System	✓	✓	✓	✓
Front & Rear Power Windows	✓	✓	✓	✓
Steering Column Adjustment	✓(Tilt)	✓(Tilt)	✓(Tilt & Telescopic)	✓(Tilt & Telescopic)
Front Accessory Socket	✓	✓	✓	✓
<b>EXTERIORS</b>				
Auto Headlamps with Follow me Home & Lead Me to Vehicle	-	-	-	✓
Alloy Wheels	-	-	✓(Painted)	✓(Precision Cut)
Steel Wheels with Wheel cover	✓	✓	-	-
Projector Headlamps	✓(Bi-Halogen)	✓(Bi-Halogen)	✓(Dual LED)	✓(Dual LED)
Floating LED Day Time Running Lamps	-	-	✓	✓
Front Fog Lamps (LED)	-	-	✓	✓
Roof Rail	-	-	✓	✓
Roof End Spoiler	✓	✓	✓	✓
Chrome Accentuated Front Grille	✓	✓	✓	✓
Rear Combination Lamp (LED)	✓	✓	✓	✓
Shark Fin Antenna	✓	✓	✓	✓
Dual Tone Exterior (In Selected Colours)	-	-	✓	✓
Wheel Arch Cladding	✓	✓	✓	✓
Skid Plate (Fr & Rr)	✓(Black)	✓(Black)	✓(Silver)	✓(Silver)
Side Under Body Cladding	✓	✓	✓	✓
Side Door Cladding	✓	✓	✓	✓
<b>INTERIORS</b>				
Interior Color Theme	✓(Mono Tone)	✓(Mono Tone)	✓(Dual Tone)	✓(Dual Tone)
Interior Ambient Lights	-	-	-	✓
Leather Wrapped Steering Wheel <sup>A</sup>	-	-	-	✓
Co-Driver Side Vanity Lamp	-	-	✓	✓
Chrome Plated Inside Door Handles	-	-	✓	✓
Door Armrest With Fabric	-	✓	✓	✓
Luggage Lamp	-	-	✓	✓
Glove Box Illumination	-	-	-	✓
Front Footwell Illumination	-	-	✓	✓
Cabin Lamp	✓	✓	✓	✓
Flat Bottom Steering Wheel	✓	✓	✓	✓
Rear Parcel Tray	-	-	✓	✓
Hook In Luggage Area	✓	✓	✓	✓
IP Ornament	✓(Black)	✓(Black)	✓(Silver)	✓(Silver)
<b>COLOUR VARIANTS</b>				
Splendid Silver With Midnight Black Roof (Dual Tone)	-	-	✓	✓
Sizzling Red with Midnight Black Roof (Dual Tone)	-	-	✓	✓
Brave Khakhi with Arctic White Roof (Dual Tone)	-	-	✓	✓
Brave Khakhi	-	✓	-	-
Splendid Silver	✓	✓	✓	-
Sizzling Red	✓	✓	-	-
Exuberant Blue	✓	✓	-	✓
Pearl Arctic White	✓	✓	✓	✓
Magma Grey	✓	✓	✓	✓
Pearl Midnight Black <sup>#A</sup>	-	-	✓	✓

SPECIFICATION SHEET		PETROL	CNG
VARIANTS	LXi MT, VXi MT/AT ZXi MT/AT, ZXi+ MT/AT	LXi MT, VXi MT, ZXi MT	LXi MT, VXi MT, ZXi MT
<b>DIMENSIONS</b>			
Length (mm)	3995		
Width (mm)	1790		
Height (unladen) (mm)	1685		
Wheelbase (mm)	2500		
Seating Capacity	5		
Boot Space (L)	328*		
<b>ENGINE</b>			
Engine Type	K15C (MT) K15C Smart Hybrid (AT)	K15C	
Fuel Type	Petrol	Petrol+CNG (Bi-fuel)	
Capacity (cc)	1462		
Max Power	75.8 kW @ 6000 RPM 103.1 PS @ 6000 RPM	74.0 kW @ 6000 RPM (Petrol Mode) 100.6 PS @ 6000 RPM (Petrol Mode) 64.6 kW @ 5500 RPM (CNG Mode) 87.8 PS @ 5500 RPM (CNG Mode)	
Max Torque	136.8 Nm @ 4400 RPM	136.0 Nm @ 4400 RPM (Petrol Mode) 121.5 Nm @ 4200 RPM (CNG Mode)	
Emission Type	BS VI		
Fuel-Efficiency	17.38 km/l(MT) 19.80/l (AT)	25.51 km/kg	
Fuel Tank Capacity (L)	48	Petrol: 48 CNG: 55 (Water Equivalent)	
Idle Start Stop	✓(AT)	-	
Brake Energy Regeneration	✓(AT)	-	
Torque Assist During Acceleration	✓(AT)	-	
<b>TRANSMISSION</b>			
Transmission	5 MT / 6AT	5 MT	
<b>BRAKES</b>			
Front	Ventilated Disc		
Rear	Drum		
<b>SUPENSION</b>			
Front	Mac Pherson Strut & Coil		
Rear	Torsion Beam & Coil Spring		
<b>TYRE</b>			
Tyre Size	215/60 R16*		

SUZUKI CONNECT <sup>™</sup>	
VARIANTS	ZXi+ MT/AT
<b>SAFETY AND SECURITY</b>	
Emergency Alerts	✓
Breakdown notification	✓
Stolen Vehicle Notification and Tracking	✓
Immobilizer Request	✓
Tow Away Alert and Tracking	✓
Geofence	✓
Safe Time Alert	✓
Valet Alert	✓
<b>REMOTE OPERATIONS</b>	
Remote AC Control (AT only)	✓
Door Lock/Cancel Lock	✓
Headlight Off	✓
Hazard Lights On/Off	✓
Alarm On/Off	✓
Smartwatch Connectivity	✓
Suzuki Connect Skills for Amazon Alexa <sup>****</sup>	✓
<b>VEHICLE STATUS &amp; ALERTS</b>	
Low Fuel & Low Range Alert	✓
Over Speed Alert	✓
AC Idling	✓
Door & Lock Status	✓
Seat Belt Alert	✓
Battery Status	✓
Trip (Start & End)	✓
Headlamp & Hazard Lights	✓
<b>LOCATION &amp; TRIPS</b>	
Live Vehicle Tracking & Location sharing	✓
Driving Score	✓
Navigate to Car	✓
View & Share Trip History	✓
Guidance Around Destination	✓

carplay-applecarplay. Apple CarPlay is compatible with the iPhone models listed in the following link: <http://www.apple.com/ios/carplay>. Android Auto<sup>™</sup> extends the Android platform into the car in a way that's purpose-built for driving. It is designed to minimise distraction so you can focus on driving with Google<sup>™</sup> services like Google Map<sup>™</sup> and Google Search<sup>™</sup>. Get the Android Auto app on Google Play<sup>™</sup>. Android Auto is available in the countries listed at the following link: <https://www.android.com/auto/#hit-the-road>. Most phones with Android 5.0+ work with Android Auto: <https://support.google.com/androidauto/#6140477>. Android, Android Auto, Google, Google Play and other marks are trademarks of Google Inc. \*Some parts of the leather appointed upholstery will contain man-made material. \*\*For details on functioning of safety features including air bag, kindly refer to the Owners Manual. \*Available only in ZXi/ZXi+ variants as a Limited edition, till the stock lasts. \*\*\*Seat belt reminder comes on unless all rear passenger's seat belts are fastened irrespective of the presence or absence of passenger.

LEGEND: (✓) Available, (–) Not Available. Maruti Suzuki India Limited reserves the right to change without prior notice prices, colours, equipment specifications and also discontinue models. Images are for reference purpose only. Accessories and features shown in the pictures may not be part of standard equipment. Features shown may vary from variant to variant. Colours may vary from actual body colour due to printing on paper. The black glass in the vehicle is due to lighting effect. \*VDA Method. \*\*Suzuki Connect (Available Through Phone/ Smartwatch/ Suzuki Connect skill for Amazon Alexa). Suzuki Connect is a network dependent telematic device. For detailed features, refer to Suzuki Connect brochure. \*\*\*Fuel efficiency as certified by test agency under Rule 115 of CMVR 1989. \*\*\*\*Amazon, Alexa, and all related marks are trademarks of Amazon.com, INC. or its affiliates. #If the vehicle's speed exceeds 80 km/h, then the primary level warning will beep twice every minute. And, if the speed goes above 120 km/h, the secondary level warning will keep beeping. If the vehicle's speed slows down to 118 km/h, primary warning will resume. If the vehicle is slowed down to 78 km/h, speed alert warning will stop. This buzzer does not indicate any malfunction in the vehicle. #Spare wheel material is steel & spare tyre size is 215/60 R16. \*\*\*Apple and iPhone are trademarks of Apple Inc. registered in the U.S. and other countries. Apple CarPlay is a trademark of Apple Inc., Apple CarPlay is available in the countries listed in the following link: <http://www.apple.com/ios/feature-availability/#apple>



Sizzling Red with Midnight Black Roof



Brave Khakhi with Arctic White Roof



Splendid Silver with Midnight Black Roof



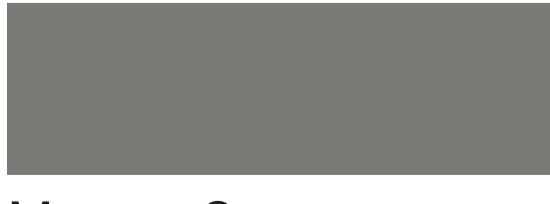
Sizzling Red



Brave Khakhi



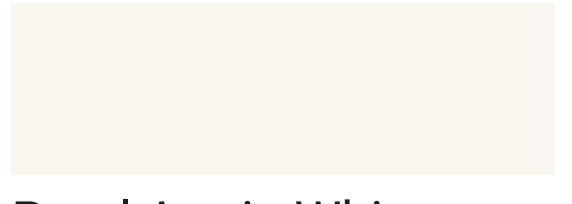
Exuberant Blue



Magma Grey



Splendid Silver



Pearl Arctic White



Pearl Midnight Black<sup>#A</sup>

LXi, VXi,  
ZXi & ZXi+ MT  
**17.38**<sup>\*\*\*</sup>  
km/l

VXi, ZXi & ZXi+ AT  
**19.80**<sup>\*\*\*</sup>  
km/l

LXi, VXi, & ZXi  
CNG MT  
**25.51**<sup>\*\*\*</sup>  
km/kg



# MARUTI SUZUKI ARENA

For more details, contact Toll Free No: 1800 102 1800, 1800 1800 180

Maruti Suzuki India Limited, reserves the right to change without notice, prices, colours, equipments specifications, variants and also to discontinue models. Accessories and features shown in the pictures may not be part of standard equipment, and will differ according to the variant. For variant-specific features, refer to the equipment list. Colours shown may vary from actual body colours due to printing on paper. Images used are for illustration purposes.

MARUTI SUZUKI INDIA LTD., Plot No. 1, Nelson Mandela Road, Vasant Kunj, New Delhi 110070, Tel.011-46781000.